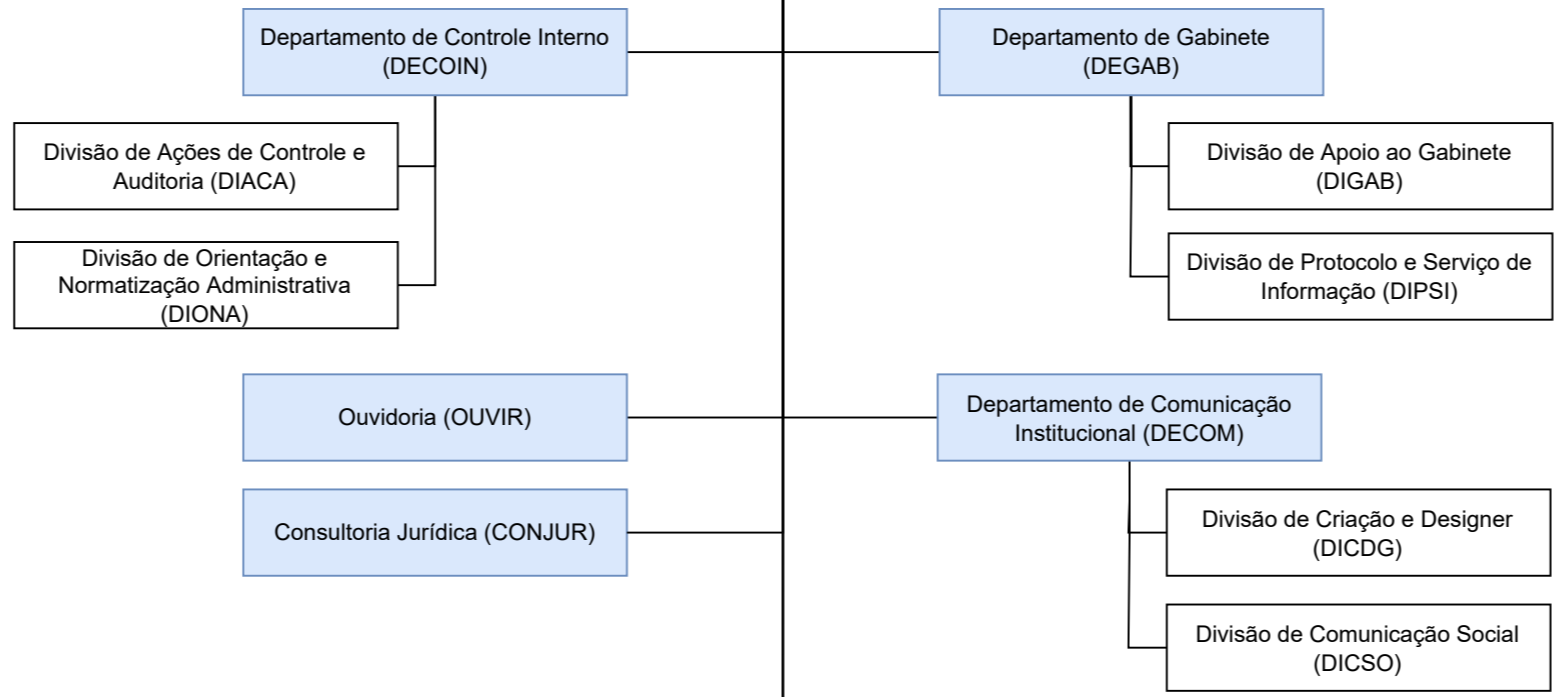
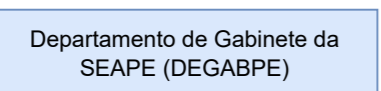


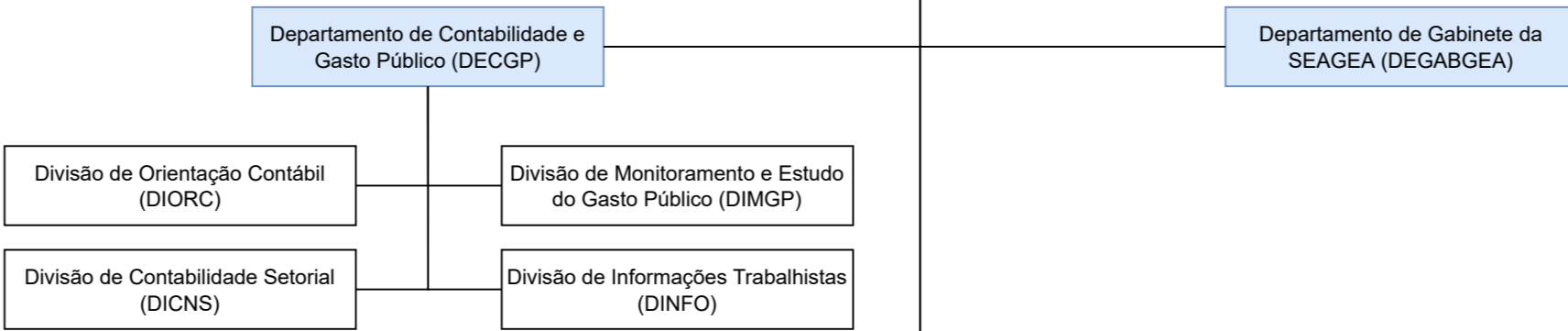
Secretaria de Estado de Administração - SEAD



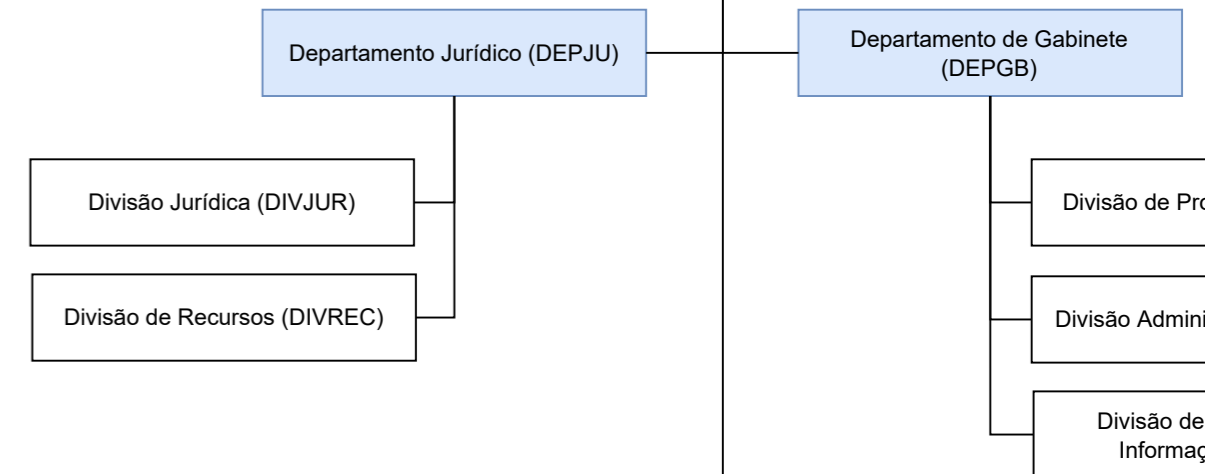
Secretaria Adjunta de Pessoal (SEAPE)



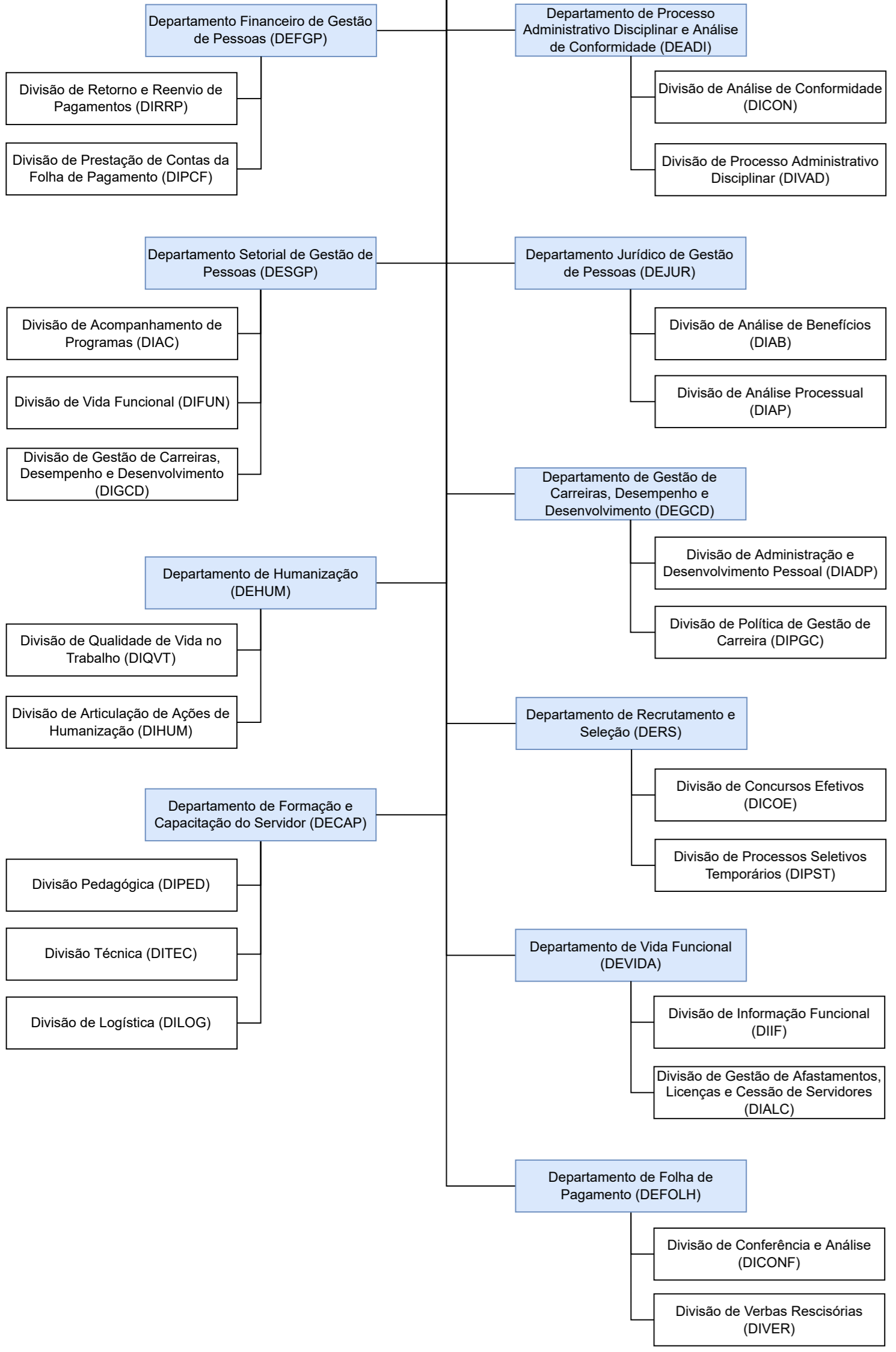
Secretaria Adjunta de Gestão Administrativa (SEAGEA)



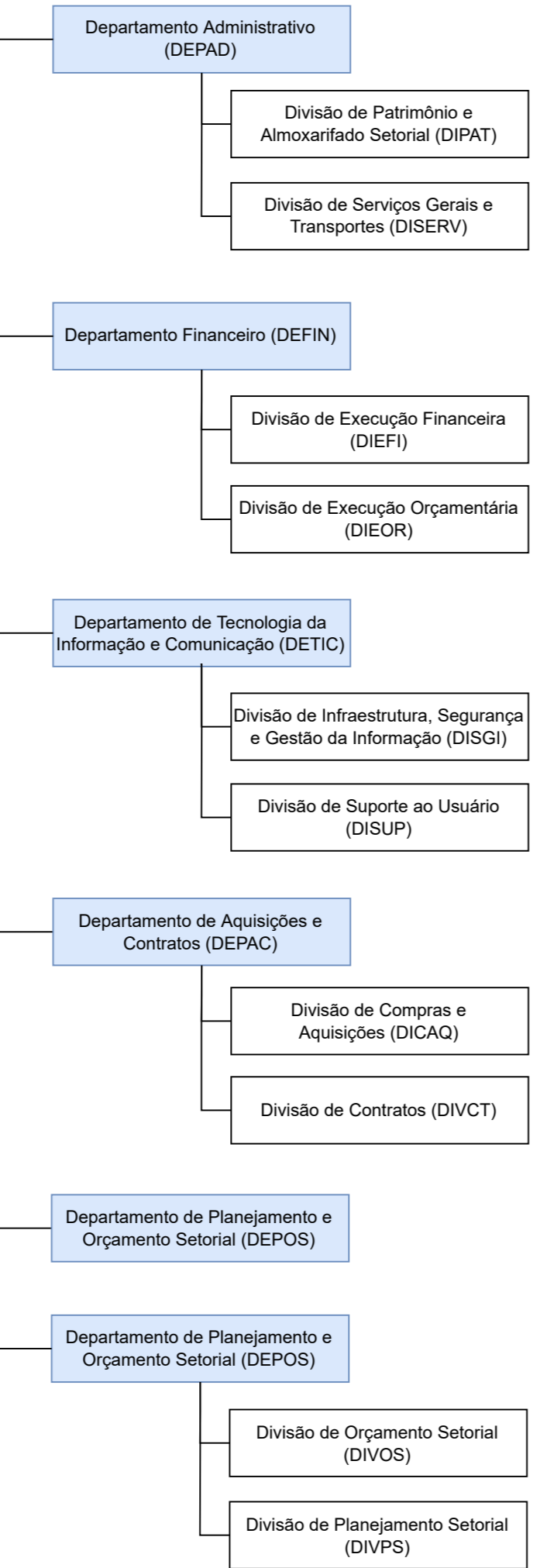
Secretaria Adjunta de Compras, Licitações e Contratos (SELIC)



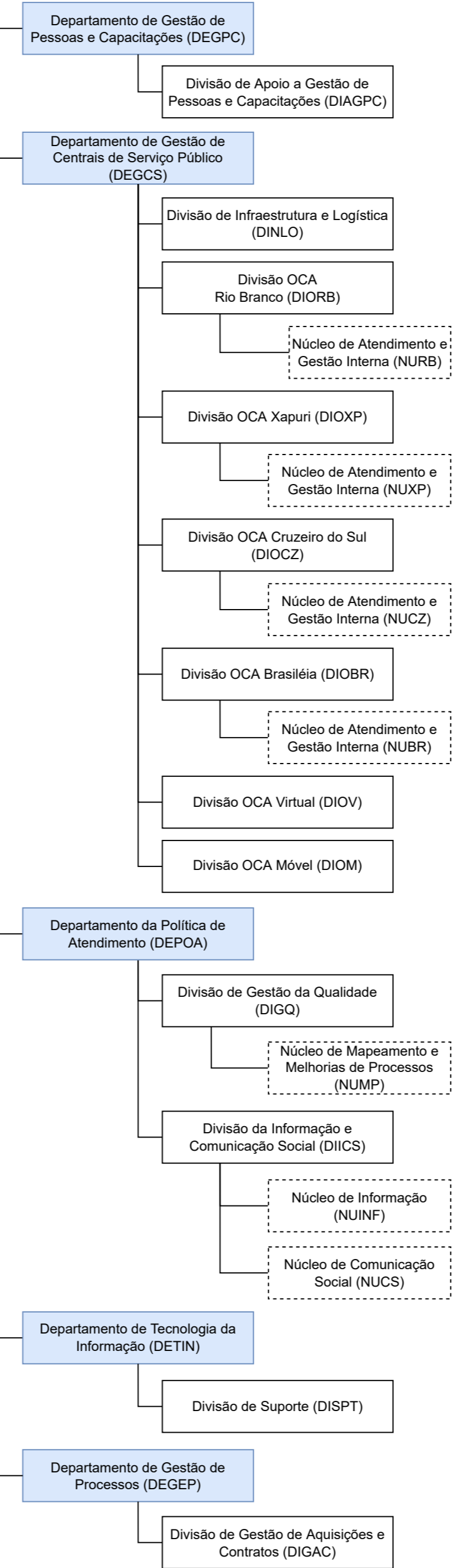
Diretoria de Gestão de Pessoas (DIRGEP)



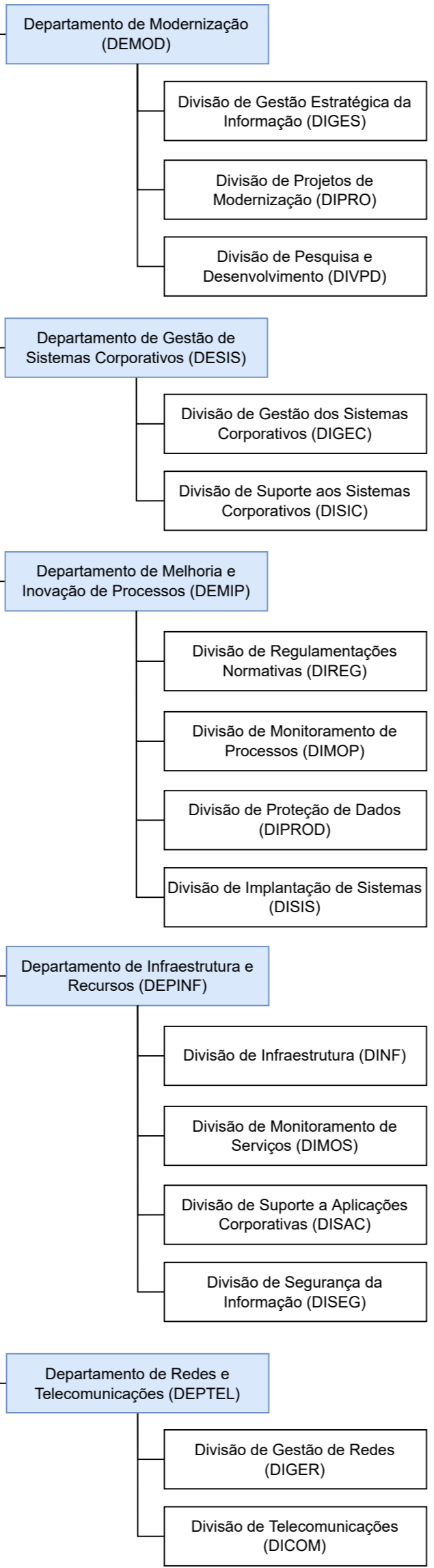
Diretoria de Administração e Finanças (DIRAF)



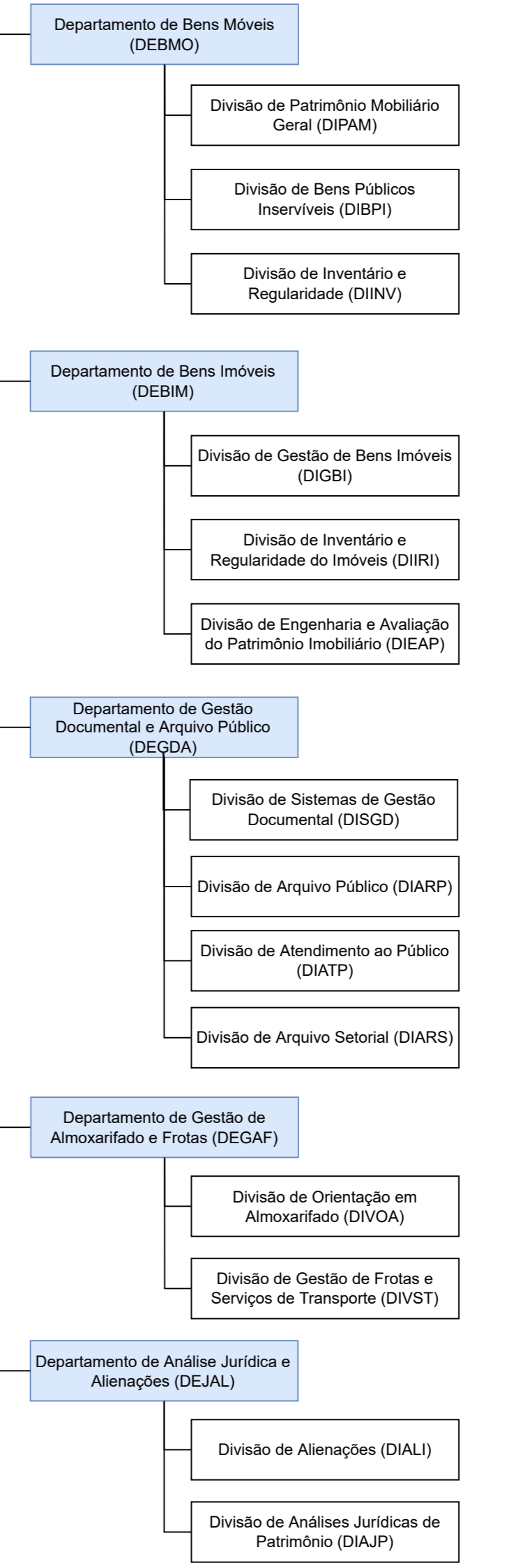
Diretoria de Organização em Centros de Atendimento (DIOCC)



Diretoria de Modernização e Desenvolvimento Institucional (DIRMOD)



Diretoria de Gestão Patrimonial, Documental e Arquivística (DIRPAP)



Diretoria de Compras, Licitações e Contratos (DIRLIC)

